

Links of London Watch Over Me Evil Eye ring

The evil eye is an ancient amulet given a new contemporary style by Links of London in its Watch Over Me collection



Theo Fennell Angel ring

Theo Fennell's poison ring contains a hidden evil eye amulet on the inside and carved angel's wings on the outside, a precious symbol of love and protection



Below: Sevan Cupid ring

Cupid, associated with love, can be given as a token of love or worn as a symbol of hope in the enduring power of love. This ring by Sevan contains a reverse carving inside the centre stone that is then hand painted



Links of London Full Moon earrings

From the Watch Over Me collection



Talisman charm by Hot Diamonds

Links of London watch with charm

The new Links of London watches are all designed so that charms can be attached



Scarlett Traveller charm

A traveller charm by Scarlett fits on the drawstring of a rucksack and reminds the traveller to keep in touch with loved ones left behind





TRENDS



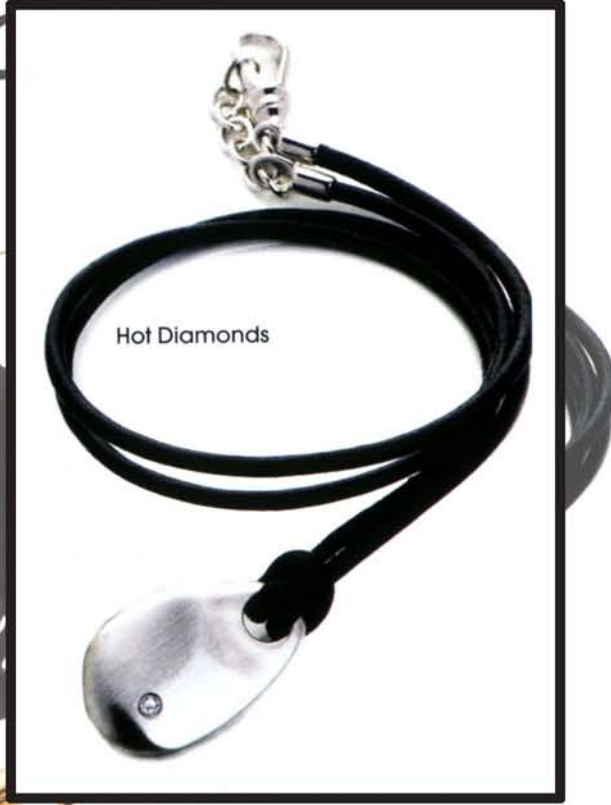
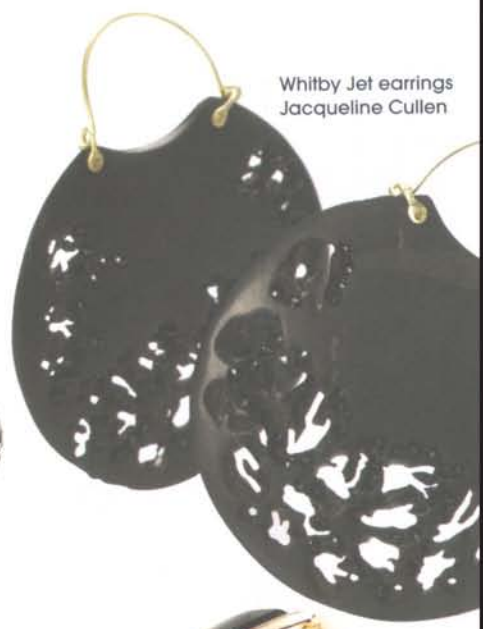
Thom Browne for Harry Winston



D&G radiator pendant

Men & materials

Whitby Jet earrings
Jacqueline Cullen



Hot Diamonds

Black wooden bangle
Guess



Rose gold and smoky quartz cufflinks, Hermès



TV Collection
Alexis Dove



Vintage necklace, D&G



Autore

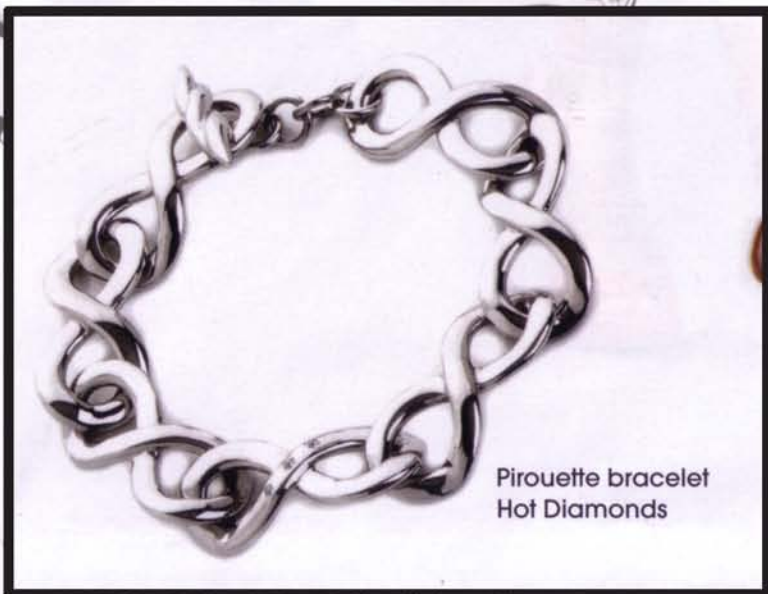
Waterfall necklace
Dower & Hall



New-look pearls & chains



Kit Heath



Pirouette bracelet
Hot Diamonds

Pirouette bracelet
Hot Diamonds



Breaker



Tahiti silk chain necklace
Niin